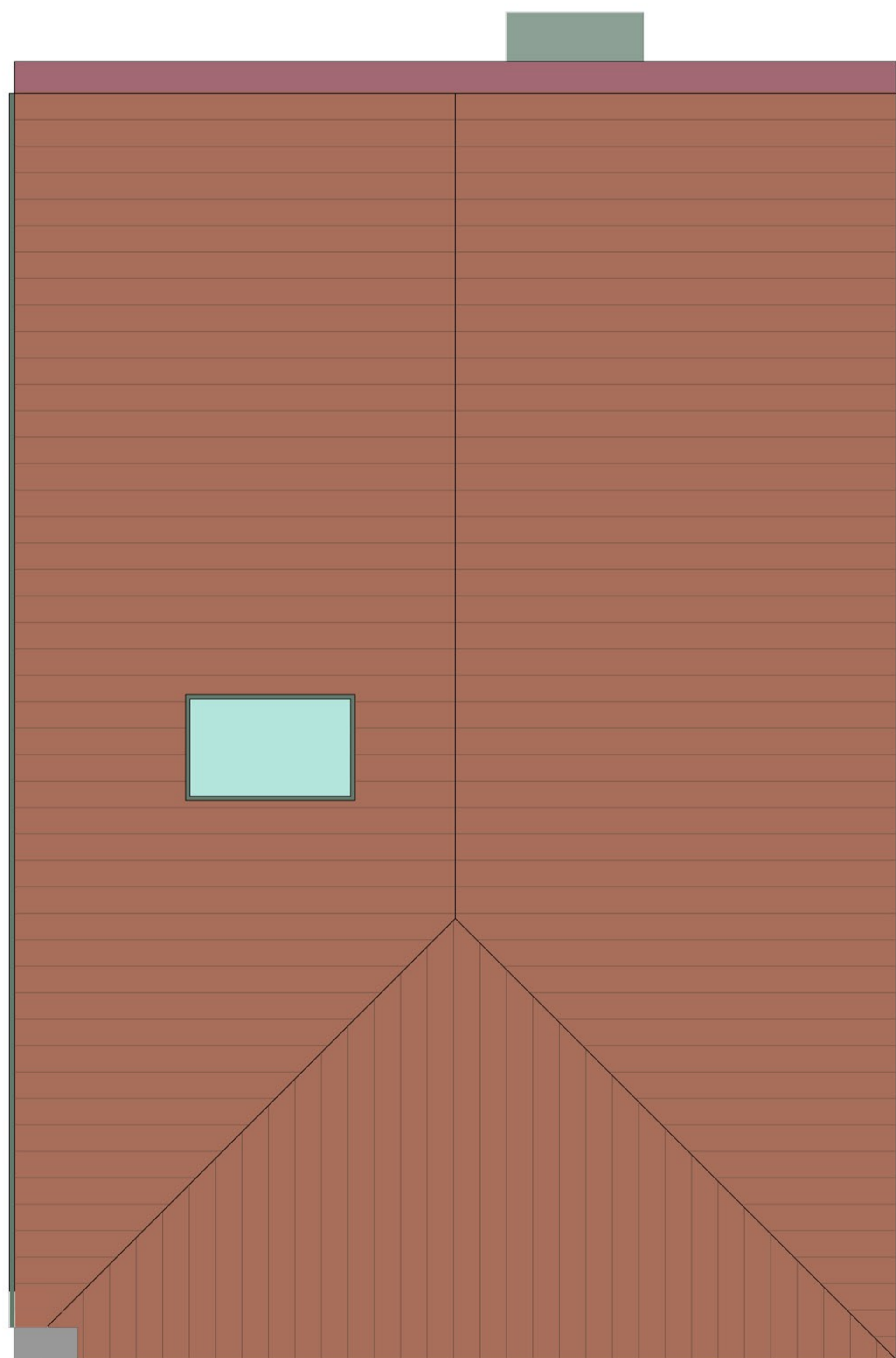


FLOOR PLAN @ 1:50



SCALE BAR
1:50



ROOF PLAN @ 1:50

- SCHEDULE**
- MALE CHANGING & SHOWERS
 - FEMALE CHANGING & SHOWERS
 - WC'S
 - DWC'S
 - OFFICE
 - BREAK OUT ROOM
 - STORE
 - KITCHEN
 - PLANT
 - SPORT AREA
- CAR PARKING = 13 SPACES**
- TOTAL GIFA = 211sqm**

NEW COLLEGE, TELFORD - INDOOR SPORTS FACILITY

Notes

- Copyright in this drawing remains the property of BM3 Architecture Limited.
- Do not scale this drawing. Work to figured dimensions only.
- Contractors and consultants are to advise BM3 Architecture Limited of any discrepancies.

Revision

A	Updated to rotate chimney on plan, canopy added and denote Planning Drawing rather than Draft.
C	Removed note to Boxing Club and Replaced with Indoor Sports Facility

Date	By	Chkd
10.08.22	BR	PJS
31.08.22	VJ	PJS

PLANNING

Project
NEW COLLEGE
TELFORD

Drawing
RETIREMENT LIVING
INDOOR SPORTS FACILITY
FLOOR AND ROOF PLAN

Client
LOVELL

CIS/b Element PLANNING	Revision C
---------------------------	---------------



Scale 1:50@A1	Dated DEC 21	Job No. 71366	Drawing No. D113	Drawn by VJ	Checked -	CIS/b Element PLANNING	Revision C
------------------	-----------------	------------------	---------------------	----------------	--------------	---------------------------	---------------

Birmingham Office 28 Pickford Street, Digbeth, Birmingham, B5 5QH T. 0121 633 0000 F. 0121 633 0300 E. design@bm3.co.uk